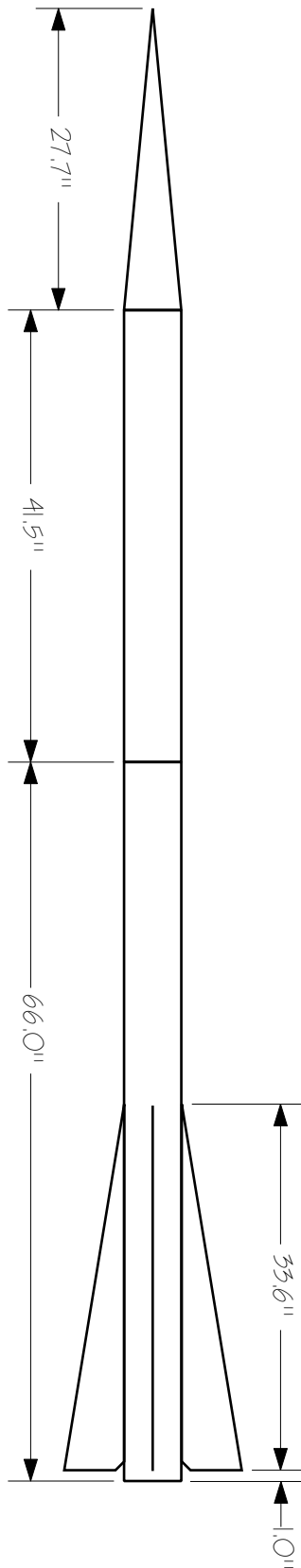


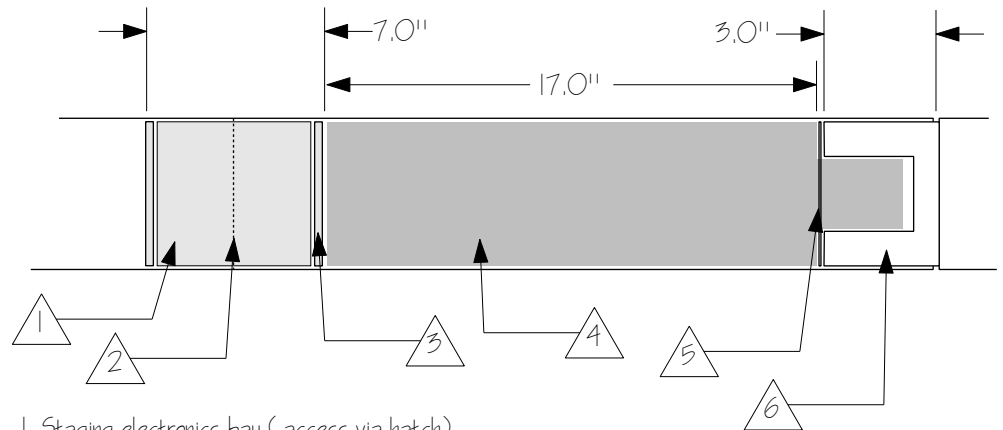
Asp Airframe (81% scale)

John Coker
 (650) 685-1890
 john@jcs.w.com

Exterior Dimensions

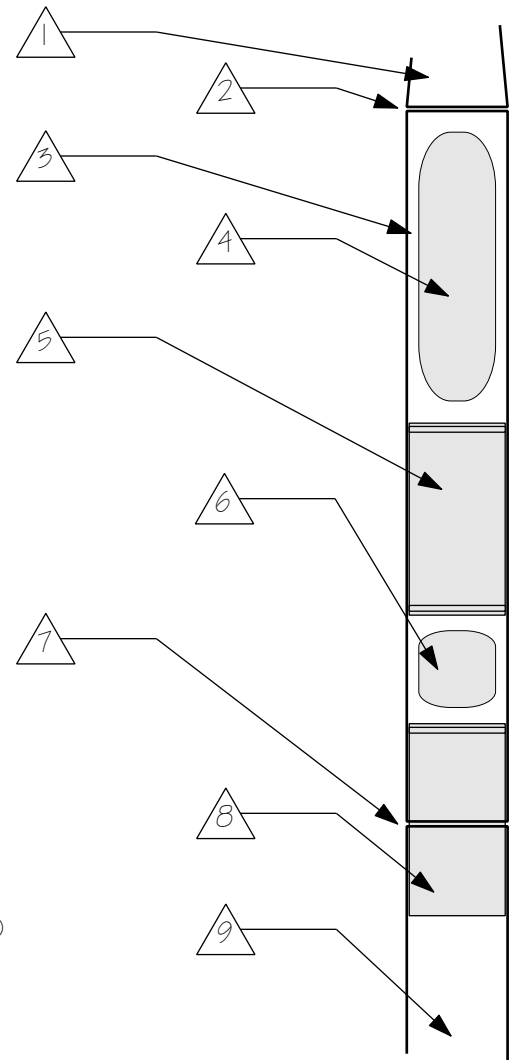


Aft Detail



1. Staging electronics bay (access via hatch)
2. Seam between airframe sections (24.5" from aft)
3. Forward engine block bulkhead
4. Pegasus fin motor (5" x 17" body)
5. Motor retention ring (1/2" thick)
6. Interstage coupler forward end

Recovery System Detail



1. Nose cone
2. Break for main recovery
3. Forward airframe section (41.5" long)
4. Main parachute
5. Electronics bay (in 10" coupler section)
6. Drogue parachute
7. Break for apogee recovery
8. Coupler section for drogue bay
9. Aft airframe section (66.0" long)